

James Peterson recognized for outstanding construction

Contractors honored for projects in Chippewa, Marathon, Door, Oneida, Sauk, Sheboygan, Dane, Milwaukee and Brown counties

The Wisconsin Department of Transportation (WisDOT) announced nine Excellence in Construction Awards for 2016 during the annual Contractor-Engineer Conference held recently in Madison. Top winners include a grading project in Chippewa County, asphalt paving project in Marathon County, concrete paving project in Door County, small bridge project in Oneida County, large bridge project in Sauk County, and a multi-use trail in Sheboygan County. The Major Project Category recognized the Verona Road project in Dane County, work along the Zoo Interchange in Milwaukee County, and I-41 in Brown County.

"Wisconsin is fortunate to have so many top-notch private contractors who help us complete vitally important transportation improvements across the state," said Beth Cannestra, director of WisDOT's Bureau of Project Development. "As valued private sector partners, they deserve praise for the quality of their work, and for embracing innovations that help us save time and money."

Chippewa County—The Excellence in Grading Award went to James Peterson Sons, Inc. of Medford for work on the County X project in Chippewa County. The project included widening of a causeway between Lake Wissota and Little Lake Wissota to accommodate the construction of a new structure on County X. Environmental considerations and water depths up to 40 feet complicated the project, requiring specialized equipment and techniques including an excavator with an 85-foot reach and Automated Machine (GPS) Guidance equipment that was adapted for marine applications.

Marathon County—The Excellence in Asphalt Paving Award went to American Asphalt of Wisconsin headquartered in Mosinee for work on an eight-mile section of US 51 between Wausau and Merrill in Marathon County. The project used an innovative specification to extend the durability of the asphalt pavement. The contractor worked with WisDOT to refine the specification and produce a higher quality and more consistent material which will provide travelers a more durable riding surface.

Door County—The Excellence in Concrete Paving Award went to Vinton Construction Company of Manitowoc for

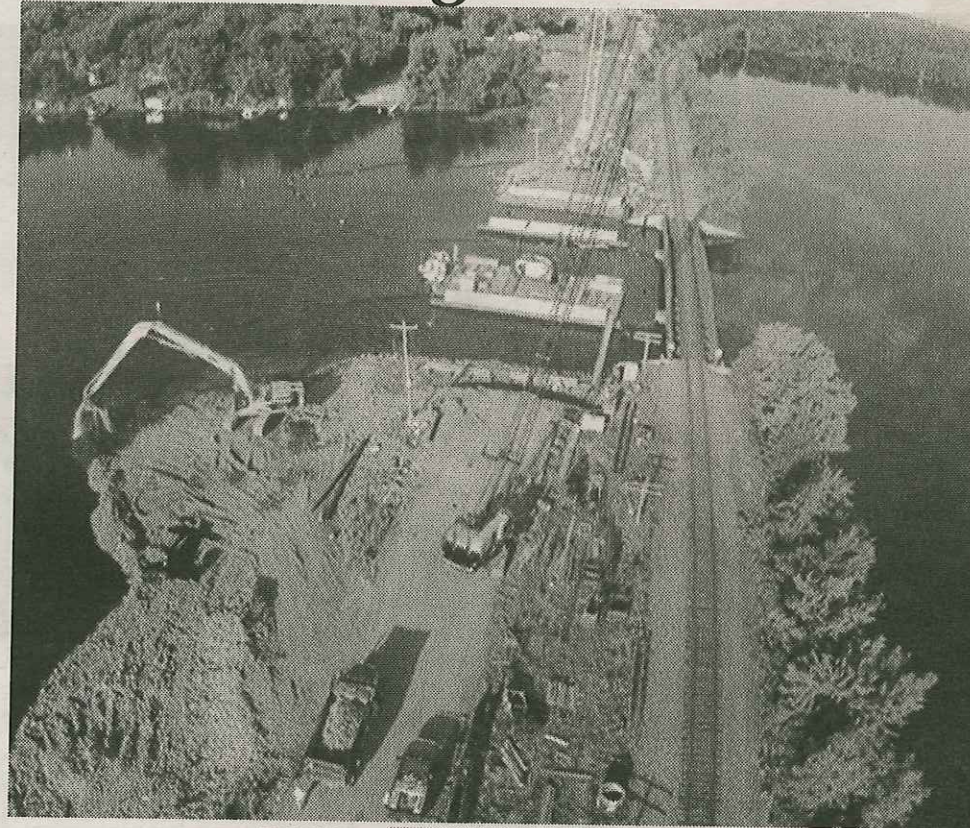
reconstruction of a three-quarter-mile segment of WIS 42 from County Walk Drive to Scandia Road in the Door County community of Sister Bay. Reconstruction of the urban roadway was completed under traffic, ahead of schedule and under budget while minimizing public disruption. The corridor accommodates about 7,000 vehicles on an average day, but can experience twice that volume during peak travel periods.

Oneida County—The Excellence in Small Structures Award went to Pfeifer Brothers Construction Company, Inc. of Neenah for construction of the US 51 overpass for Bearskin Trail in Oneida County. The project replaced an outdated structure with inadequate vertical and horizontal clearances. Along with enhancing safety and traffic flow, the structure features architectural surface treatments, decorative railing and concrete staining allowing the overpass to better blend with its natural surroundings.

Sauk County—The Excellence in Large Structures Award went to Lunda Construction Company of Black River Falls for construction of the US 12 bridge between Lake Delton and Sauk City in Sauk County. The bridge was constructed as part of the 3.8-mile Baraboo Bypass project. The 766-foot-long structure spans the Baraboo River and Wisconsin and Southern Railroad, peaking at 119 feet above the river.

Sheboygan County—The Excellence in Construction of Unique Projects went to Lunda Construction Company of Black River Falls for construction of a 2.6-mile bike and pedestrian trail in Sheboygan. The project involved retaining walls, prefabricated steel truss structures and a boardwalk constructed over environmentally-sensitive areas.

Dane County—A Major Project "Structure" Special Recognition Award went to Zenith Tech, Inc. of Waukesha for work on the Beltline and Verona Road (US 18) project between Verona Road and Seminole Highway in Dane County. The project features a single point interchange that will optimize traffic flow through the area. The project involved about 2.1 million pounds of high strength steel, 430,000 pounds of stainless steel bar reinforcement and 2,000 cubic yards of high performance concrete for bridges. The work was staged to maintain traffic flow averaging 65,000 vehicles daily on Verona Road and 120,000 vehicles daily on the Beltline.



DOT PHOTO

James Peterson Sons, Inc. of Medford was recognized by the state for outstanding work on the CTH X project in Chippewa County. The project included widening of a causeway between Lake Wissota and Little Lake Wissota to accommodate the construction of a new structure on County X.



Milwaukee County—Wisconsin Constructors II, LLC received a Special Recognition Award for their work on Phase 1 of the Zoo Interchange Major Project in Milwaukee County. Wisconsin Constructors II consists of three construction firms: Lunda Construction Company of Black River Falls; Michels Corporation of Brownsville; and Edgerton Contractors of Oak Creek. The project required 900,000 cubic yards of excavation, 49 lane miles of concrete pavement, 14 structures and 21 retaining walls.

Brown County—A Major Project Spe-

cial Recognition Award was also given to Lunda Construction Company for work on a 4.8-mile section of I-41 between De Pere and Suamico—part of the I-41 Corridor Expansion Project in Brown County. The project included 19 bridges, 22 retaining walls, seven noise walls, 27 sign structures, 42,000 linear feet of barrier wall, and 45 lane miles of concrete pavement. The contractor worked closely with WisDOT to accommodate additional traffic volumes on I-41 when I-43 had to be closed for emergency repairs to the Leo Frigo Bridge.